

**AlcoMate®**  
Premium

# Breath Alcohol Tester



Learn More About  
**AlcoMate Employee Drug Testing Kits**

 **EmployeeDrugTestingAce.com**  
Trusted Proven Secure

[www.DrugTestingAce.com](http://www.DrugTestingAce.com)

[www.EDTAce.com](http://www.EDTAce.com)

**No Calibration**  
**(PRISM™ Sensor Technology)**

- ✓ **FDA 510(k) Cleared**
- ✓ **DOT / NHTSA Approved**
- ✓ **Meets US Coast Guard Requirements**
- ✓ **ISO 9002 Certified**

Instant Technologies, Inc.



an  Inverness medical company

**Innovative Drug Screening Solutions**  
**Quality • Choices • Support**

## Product Information

The newest personal breathalyzer available with exclusive PRISM Sensor Technology.

### Packaging Contents:

AlcoMate® Premium AL 7000 Full .....	AlcoMate Premium Breathalyzer User's Manual Pre-Installed Sensor Module AA Batteries (2) Mouthpieces (5) Car Adapter Power Cord Carrying Pouch Hand Strap Deluxe Anti-Fiber Carrying Case
--------------------------------------	---



**Includes:**  
(50) Additional Mouthpieces  
(1) Additional Sensor Module

## User's Manual

PRISM Technology w/Easy-Replace Sensor Panel  
Active Pressure Sensor (Deep-Lung Air Sampling)  
Cumulative Test Counter + Low Battery Indicator  
"One-Way-Flow" Mouthpieces  
Internal Mouthpiece Storage Slot (x2)



The AlcoMate® Premium is our flagship breathalyzer that provides you with the most advanced, accurate and convenient commercial breath testing system available. **The Premium never requires calibration service.** With the unique Easy-Replace Sensor Panel, module replacement takes just a few seconds!

The AlcoMate® Premium's PRISM Sensor Technology uses advanced next - generation components to improve upon prior oxide semiconductor technologies and introduces a level of accuracy, reliability and ease-of-use never before achieved among portable screening breathalyzers.

Note: The only legally valid measure of %BAC (percent Blood Alcohol Concentration) is obtained by blood testing or other evidential method of measurement. This device is for screening purposes only and should be used as a monitoring guide. This device must be used strictly in accordance with the instructions provided with the product.

## Device Operations

If you are using the AlcoMate® Premium for the first time, remember to install two 1.5V AA batteries (included) and attach a mouthpiece to the unit.



Press and hold the Power Button to turn on the unit.



The cumulative test count will be displayed as you hold the Power Button down.



The display may alternately show "NOR", which is short for normal operation.



The back-lit digital display shows results clearly during day or night conditions.



Release the Power Switch. There will be a countdown as the unit warms up. The display will show "BLOW" when ready.



Secure your lips around the mouthpiece and blow sharply and steadily into the unit for about 4 seconds.



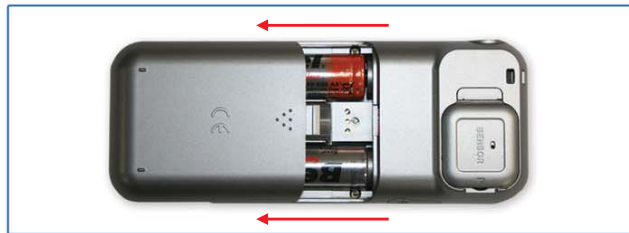
If you see "FLOW" in the display, the breath sample was not strong or long enough for measurement. Please try again.



If the device cannot take a successful sample, you will see "OUT" in the display and the unit will shut itself off.



The results will be shown for about 15 seconds. The unit will then shut itself off.



Remove the battery cover at rear of the unit and replace the old batteries with two new 1.5V "AA" batteries. Make sure to properly align the batteries by checking the +/- orientation.



**Note:** There is a Mouthpiece Storage Slot between the batteries. The Slot holds 2 mouthpieces.



## Sensor Module Replacement

Following steps to install a new sensor module.

**(VERY IMPORTANT: The device MUST BE TURNED OFF in order to avoid IMMEDIATE DAMAGE to the sensor.)**



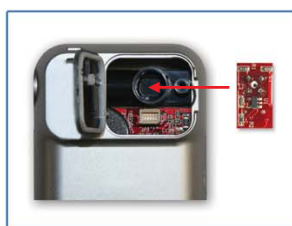
Open the easy-replace sensor panel.



You will see the sensor module.



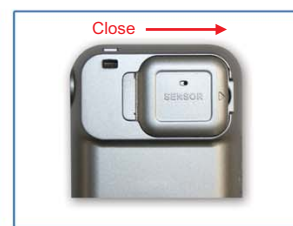
Remove the module by pulling it straight back.



Insert a new sensor module in the original position.



Make sure the new sensor module is firmly secured.



Close the easy-replace sensor panel. Ready for testing!

## WARNINGS

- WAIT AT LEAST 20 MINUTES AFTER EATING OR DRINKING BEFORE TESTING.** A breathalyzer examines “lung air” samples, not “mouth air” to calculate alcohol content. Any “contaminants” in the mouth, including alcohol, food, smoke, or even excess saliva, may interfere with testing. **This includes alcohol-based mouthwash or similar products. This is the most common cause of improper use and incorrect results.**
- Avoid testing in high wind or enclosed spaces. Poor ventilation may also lengthen the time required for warm up between tests.
- Do not blow smoke, saliva or other contaminants into the mouthpiece, as the sensor may become damaged.
- Do NOT use Premium as a tool to drink and drive.**
- Keep out of extreme temperatures and out of the reach of children.
- To maintain accuracy, the sensor module inside the Premium must be replaced every 200 tests or at least once yearly (whichever comes first). Large numbers of “high alcohol” readings may require replacing the module much sooner than normally expected.
- WARNING DISPLAY “FLOW”:** If you see “FLOW” in the display, the breath sample was not strong enough for measurement. Please try again and make sure the breath is strong and steady during sampling.
- WARNING DISPLAY “CAL”:** If you see “CAL” in the display, the Premium needs a new sensor module. **If the cumulative test counter reaches 300 tests, the Premium will display CAL automatically.** Replace sensor module with new sensor.
- WARNING DISPLAY “BAT”:** If you see “BAT” in the display, the battery power is low. Replace with new batteries.

Alcoscan®, AlcoMate®, and PRISM™ are trademarks of AK Solutions USA, LLC.

**Innovative Drug Screening Solutions**  
**Quality • Choices • Support**

09-ITV-Alco-Packet Rev B  
© 2009 Inverness Medical. All rights reserved.



## Brought to You by Employee Drug Testing Ace

Buying discounted, accurate, high quality employment drug testing kits and services is affordable, fast, easy, safe and secure with **Employee Drug Testing Ace**. You can buy employment, pre-employment and employee drug and alcohol testing kits, services and supplies tailored for employers, TPAs, nursing homes, hospitals, manufacturing, moving companies, Department of Transportation DOT, local and Federal Government agencies, auto dealerships, construction, DOD, the work place, employment agencies and more.

Our easy to use [employee drug testing](#) kits are DOT Approved, CLIA Waived, FDA 510k Cleared and SAMHSA Compliant. We provide both onsite employment drug screening and offsite employee drug screening services along with SAMHSA certified confirmation and medical review officer (MRO) services. All [employment drug screening](#) kits are on sale, discounted, and have [bulk / volume discounts](#).

- **Pay No Taxes in the USA.**, except California.
- **100% Free UPS Standard Shipping** in the Continental U.S.A. for *All* Products.
- **100% Free FedEx Overnight Shipping** in the Continental U.S.A. for *All* Specimens sent in as part of our SAMHSA Certified Confirmation Drug Testing Service.
- Onsite Third Party Administered (TPA) Employee Drug and Alcohol Collection Services.
- Over 12,000 Offsite Employee Drug and Alcohol Testing Locations Nationwide.
- The most complete [Employment Drug Testing Resource Center](#) including: information, official documents, work place drug testing information, forms, work accident info, charts, videos, post accident drug testing info, training materials, contact lists, definitions and more!

We sell affordable and guaranteed [employee drug screening](#) kits and services available at the best prices. Our prices may be cheap but our drug testing kits are of the highest quality and accuracy. If you are in the market for discounted high quality pre-employment, employee, or [employment drug testing](#) and screening kits and services, visit us today. You will be happy you did!